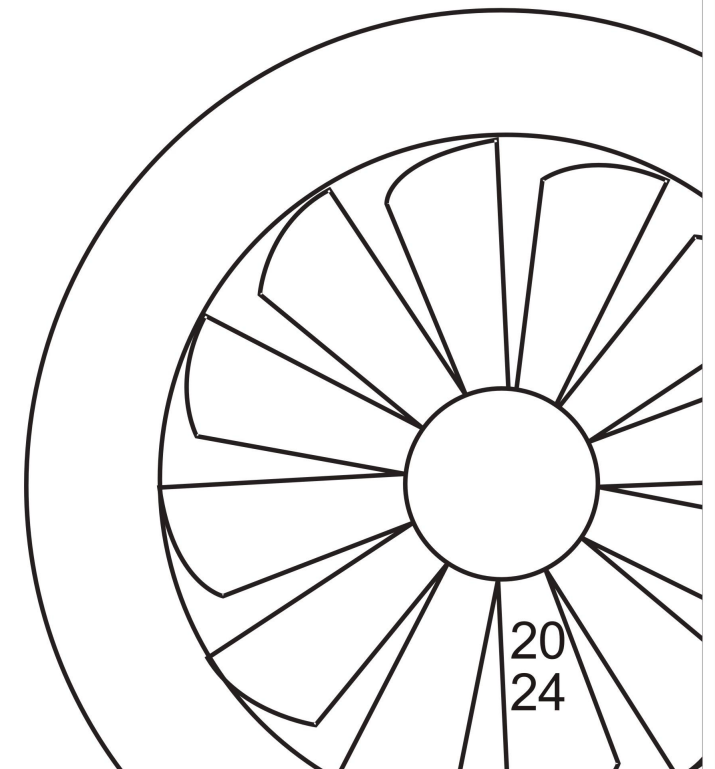


**E-ZONG® 易众**

# AIR DIFFUSER&GRILLE

WIND VENT SERIES



**E-ZONG® 易众**

GUANGZHOU YI ZHONG ALUMINUM INDUSTRY CO., LTD

Http://www.cnezong.com/

Mail://master@yizhonglvye.com

Address : Room 8053, 5/F, No. 99, Hualei Road, Liwan District, Guangzhou City, Guangdong Province, China

TEL : 020-81554508/81551627

FAX : 020-31020225

pickup address: No. 2 New Century Street, Beicun, Huangqi Town, Nanhai District, Foshan City, Guangdong Province, China

TEL : 020-81114860/81122663/0757-85991846/85991845

FAX : 020-81120926

pickup address: Yizhong Aluminum Industry, Hengzhong 6th Road, Dongguan City, Guangdong Province, China

TEL : 0769-83520755

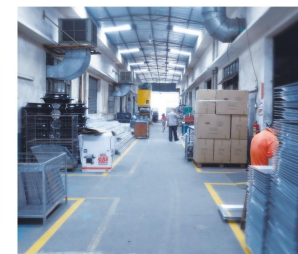
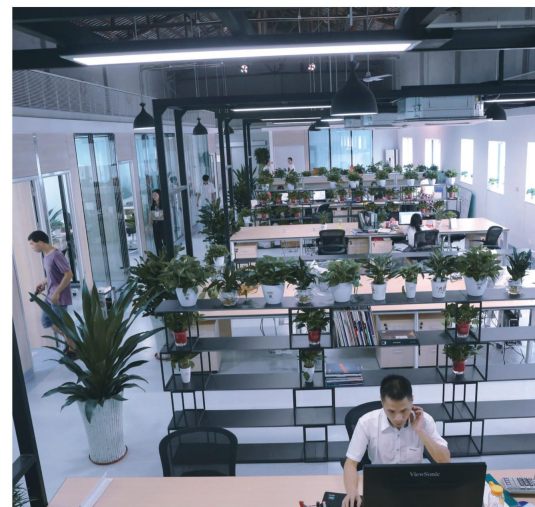
FAX : 0769-83520759

Perfect products for YOU!





● Warehouse







## ● Company profile

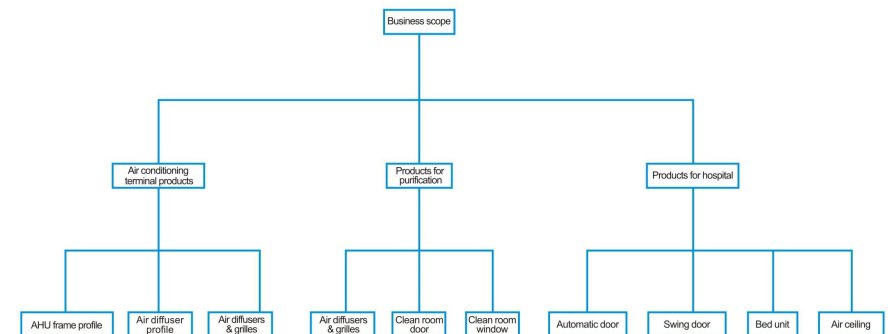
Guangzhou Yizhong Aluminum Industry Co., Ltd founded in Guangzhou, Guangdong province in 1996 named "SANHE ",has been developing for more than 20 years with branches and factories in Foshan, Dongguan, Zhongshan and Taishan. Yizhong (E-ZONG) is the most professional and perfect in the clean industry in south China.

The company integrates R&D, production and sales of clean room aluminum profiles, air-conditioning unit frame aluminum profiles, air diffuser aluminum profiles and clean room doors, medical automatic doors, swing doors, air diffuser and other aluminum products. Products are widely used in medical and health, bio-pharmaceutical, food and beverage, cosmetics, machinery and electronics industries. The production of its products introduces a full set of CNC machining equipment, and its quality is in a leading position in the same industry. Now Yizhong (E-ZONG) is occupying plant area of more than 40,000 square meters, having more than 300 employees.

Since its establishment, Yizhong (E-ZONG) has obtained the "Appearance Design Patent Certification", "Invention Patent Certification" and "Practical Patent Certification", and has passed the "ISO9001" quality management system certification. The company constantly introduces the management mode and production equipment of the leading industry, and always focuses on creating environmental aluminum products and making our products leading the trend of the highest standard. Advanced production equipment, scientific process control, and strict quality test have laid a solid foundation for Yizhong (E-ZONG)'s market.

In the future, Yizhong (E-ZONG) will continue to implement the business strategy of technology, quality and service. With innovative technology, excellent quality and service, we will sincerely work together with you all to create brilliant future!

## ● Product range



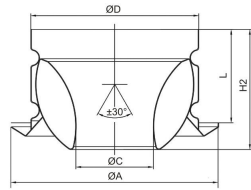
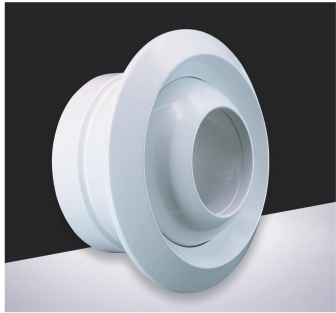


With constant pursuit and exploration, research and innovation on the core technology of purification, we have been always approved by the trade and consumers and achieved a great deal of honors, which makes our development more and more stable. Depending on the operation philosophy of good service and the spirit of persistence, we'll continue trying our best to provide you with our high-quality products and better service.

● Certificate



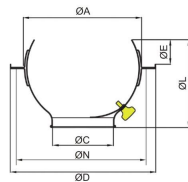
● FK026-Jet nozzle diffuser



Material: Aluminum  
 Surface finish: Powder coated  
 Color: RAL9016 or RAL9010  
 Features:  
 - 360° rotation  
 - Low noise  
 - 30° in all direction (manual, electric, pneumatic)  
 - Back with fan blade is available

Specification	100	125	150	160	200	250	315	350	400	450	500	630
ØD	98	122	147	157	197	247	312	347	397	447	497	625
ØA	139	172	200	210	265	314	390	433	495	559	622	779
ØC	45	61	75	80	105	128	165	185	210	235	256	323
L	63	72	83	91	107	135	174	186	218	235	259	335
H2	83	96	113	120	142	179	230	251	285	316	350	440

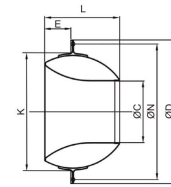
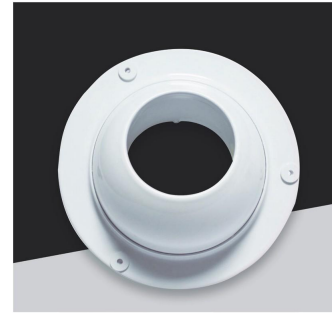
● FK043-Eyeball jet nozzle diffuser



Material: Aluminum  
 Surface finish: Powder coated  
 Features:  
 - 45° in all direction  
 - 360° rotation  
 - Local resistance coefficient:  $\xi = 1.2$

Specification	ØC	41	75	108	140	165	190	220	265
ØA	83	144	208	245	308	343	395	490	
ØD	120	194	260	299	368	415	470	580	
ØL	65	112	165	180	248	270	320	365	
ØE	11	24	50	45	82	90	120	106	
Distance of mounting holes	ØN	100	174	240	280	348	392.5	440	556

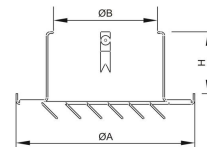
● FK048-DK-S Nozzle diffuser



Material: Aluminum  
 Surface finish: Powder coated  
 Color: RAL9016 or RAL9010  
 Features:  
 - 45° in all direction  
 - 360° rotation

Specification	ØC	60	75	105	130	160	185	210
ØN	157	174	230	281	348	392.5	440	
ØD	169	194	251	299	365	415	470	
L	73	90	123	156	200	220	255	
E	23	29	40	51	67	73	92	
K	116	145	190	245	310	343	395	

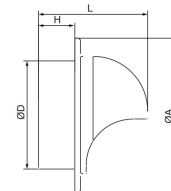
● FK024-Exhaust vent



Material: Aluminum  
 Surface finish: Powder coated  
 Color: RAL9010 or RAL9016  
 Features:  
 - Installation: Clips or screw holes  
 - With insect-prevention net

Specification	100	125	150	200
ØA	147	170	197	250
ØB	97	122	147	197
H	66	68	68	72

● FK041-Vent cap

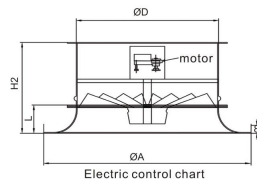


Material: Aluminum  
 Surface finish: Powder coated  
 Color: RAL9010 or RAL9016  
 Features:  
 - Water-proof type  
 - Installation: Clips or screw holes  
 - With insect-prevention net

Specification	100	125	150	200
ØD	98	123	148	198
ØA	165	190	215	270
L	120	136	151	182



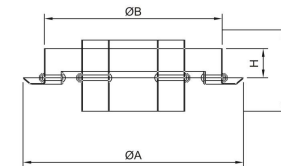
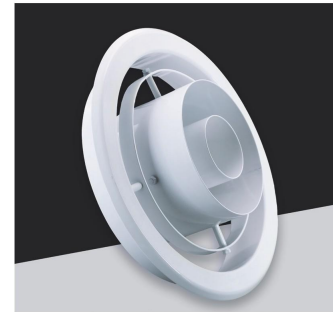
● FK025-Round swirl diffuser



Material: Aluminum  
 Surface finish: Powder coated  
 Color: RAL9010 or RAL9016  
 Features:  
 - Blades are adjusted by turning the central core  
 - Manual, temperature or electric control

Specification	ØD	200	250	315	350	400	450	500	630	800
ØA		300	360	462	500	568	640	718	878	1070
H2 short height		97	97	128	137	166	176	190	252	
H2 high height		152	152	200	213	235	245	258	310	321
L		38	41	63	76	80	90	100	125	145
Ceiling hole size ØB		260	310	400	435	500	570	640	800	970

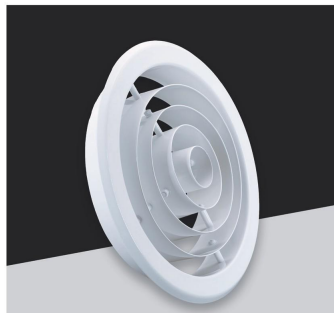
● FK047-Ring shape diffuser B



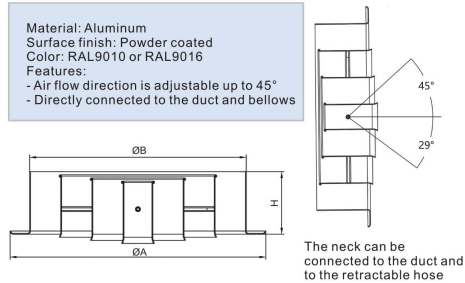
Material: Aluminum  
 Surface finish: Powder coated  
 Color: RAL9010 or RAL9016  
 Features:  
 - Air flow direction is adjustable up to 45°

Specification	ØD	150	200	250	300	350	400
ØA		210	260	310	360	410	460
ØB		148	198	248	298	348	398
C		100	100	100	100	100	100
H		51	51	51	51	51	51

● FK047-Ring shape diffuser A

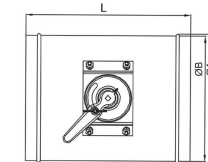
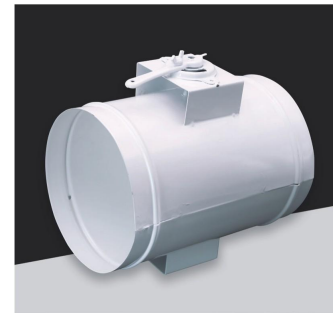


Material: Aluminum  
 Surface finish: Powder coated  
 Color: RAL9010 or RAL9016  
 Features:  
 - Air flow direction is adjustable up to 45°  
 - Directly connected to the duct and bellows



Specification	ØD	150	200	250	300	350	400
ØB		148	198	248	298	348	398
ØA		210	260	310	360	410	460
H		51	51	51	51	51	51

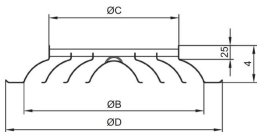
● FK038-Round volume control damper



Material: Galvanized steel  
 Surface finish: Mill  
 Features:  
 - Manual control or motorized control is available  
 - Hand positioned at an desired angle

Specification	ØA	100	125	150	200	250	300	350	400
ØB		95	120	145	195	245	295	345	315
L		150	170	200	250	300	350	400	450

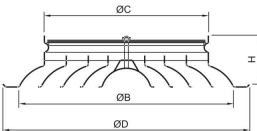
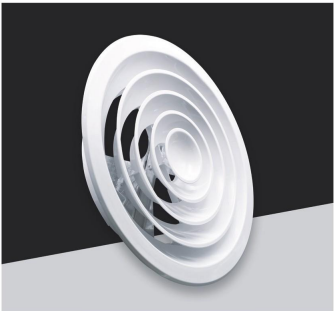
● FK004-Round ceiling diffuser



**Material:** Aluminum  
**Surface finish:** Powder coated or anodized  
**Color:** RAL9016 or RAL9010  
**Features:**  
 - Fixed central core  
 - Back with damper is available  
 - 360° air flow diffusion

Specification	Ø230	Ø250	Ø300	Ø350	Ø380	Ø400	Ø450	Ø500	Ø530	Ø560	Ø600	Ø650	Ø700	Ø750	Ø800	Ø1000
ØB	170	190	240	290	320	340	390	440	470	490	540	590	620	690	700	870
C	78	98	148	198	228	248	298	348	378	398	448	498	548	598	448	498
H	65	65	65	65	65	65	65	65	65	65	65	65	65	65	135	185

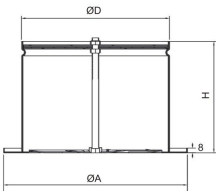
● FK005-Round ceiling diffuser with damper



**Material:** Aluminum + Steel  
**Surface finish:** Powder coated or anodized  
**Color:** RAL9016 or RAL9010  
**Features:**  
 - Turning the central core to adjust air volume  
 - Back with damper  
 - 360° air flow diffusion

Specification	Ø230	Ø250	Ø300	Ø350	Ø380	Ø400	Ø450	Ø500	Ø530	Ø560	Ø600	Ø650	Ø750
ØB	170	190	240	290	320	340	390	440	470	490	540	590	690
ØC	78	98	148	198	228	248	298	348	378	398	448	498	598
H	95	95	95	95	95	95	95	95	95	95	95	95	95

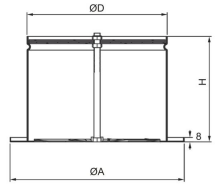
● FK032-Round floor diffuser



**Material:** Aluminum  
**Surface finish:** Powder coated  
**Color:** RAL9016 or RAL9010  
**Features:**  
 - Integral adjustable damper  
 - Includes collar and locking ring  
 - Emit a long range spiral wind column

Specification	100	125	150	180
ØD	97	123	147	177
ØA	140	166	180	220
H	120	120	130	130

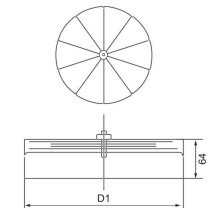
● FK050-Square floor diffuser



**Material:** Aluminum  
**Surface finish:** Powder coated  
**Color:** RAL9016 or RAL9010  
**Features:**  
 - Integral adjustable damper  
 - Clips for installation  
 - Emit a long range spiral wind column

Specification	100	125	150	180
ØD	97	123	147	177
AxA	157	180	200	236
H	120	120	130	130

● FK022-Fan blade damper

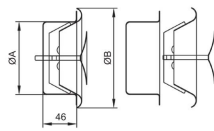


**Material:** Steel  
**Surface finish:** Mill  
**Features:**  
 - Apply to round ducts  
 - Damper can be adjusted by screwdriver

D1	100	125	150	200	230	250	300	350	380	400	450	500
----	-----	-----	-----	-----	-----	-----	-----	-----	-----	-----	-----	-----



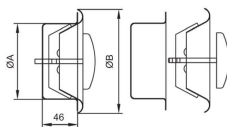
● FK020-Steel supply air disc valve



Material: Steel  
 Surface finish: Powder coated  
 Color: RAL9010 or RAL9016  
 Features:  
 - Integral adjustable damper  
 - Includes collar and locking ring  
 - Delivers a uniform 360° air discharge pattern  
 - Designed for surface mounting applications

Specification	100	125	150	160	200
ØA	98	123	148	158	198
ØB	138	165	200	210	250

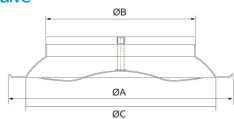
● FK021-Steel return air disc valve



Material: Steel  
 Surface finish: Powder coated  
 Color: RAL9010 or RAL9016  
 Features:  
 - Integral adjustable damper  
 - Includes collar and locking ring  
 - Delivers a uniform 360° air discharge pattern  
 - Designed for surface mounting applications

Specification	100	125	150	160	200
ØA	98	123	148	158	198
ØB	138	165	200	210	250

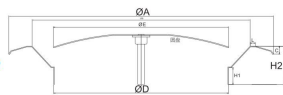
● FK033-Aluminum supply air disc valve



Material: Aluminum  
 Surface finish: Powder coated  
 Color: RAL9010 or RAL9016  
 Features:  
 - Integral adjustable damper  
 - Includes collar and locking ring

Specification	250	300	350	380	400	450	500
ØC	190	240	290	320	340	390	440
ØB	100	150	200	230	250	300	350
ØA	250	300	350	380	400	450	500

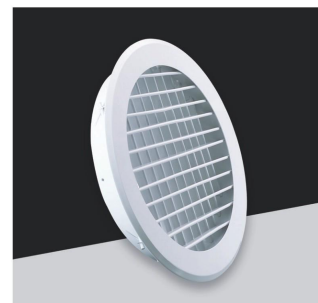
● FK035-Aluminum exhaust air disc valve



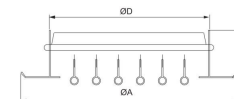
Material: Aluminum  
 Surface finish: Powder coated  
 Color: RAL9010 or RAL9016  
 Features:  
 - Integral adjustable damper  
 - Includes collar and locking ring

Specification	ØA	300	350	400	450	500
ØB	220	270	320	370	420	
C	13	13	13	13	13	
ØD	147	197	247	297	347	
H1	28	28	28	28	28	
H2	65	65	65	65	65	
ØE	150	200	250	298	350	
L	8	8	8	8	8	

● FK031-Round double deflection air grille



Material: aluminum  
 Surface finish: powder coated  
 Color: RAL9010 or RAL9016  
 Features:  
 - The front blades may be either horizontal or vertical  
 - Damper in back is available  
 - Rectangle shape type is available

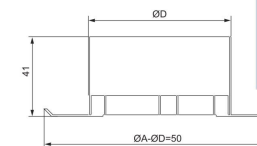


Specification	ØA	200	250	300	350	400	450	500
ØD	150	200	250	300	350	400	450	

● FK019-Round eggcrate air grille



Material: Aluminum  
 Surface finish: Powder coated  
 Color: RAL9010 or RAL9016  
 Features:  
 - Eggcrate core space is 12.5\*12.5mm  
 - Wall and ceiling mount  
 - Frame width is 30mm

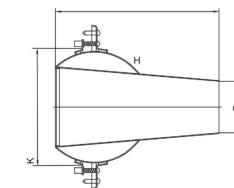


Specification	100	125	150	200	230	250	300	380	450
ØD	98	123	148	198	228	248	298	378	448

● FK037-Jet Diffuser

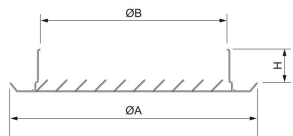


Material: Aluminum  
 Surface finish: Powder coated  
 Color: RAL9010 or RAL9016  
 Features:  
 - 360° rotation  
 - 30° in all direction  
 - Low noise



Specification	ØC	95	115	150
H		220	285	360
K		195	245	310

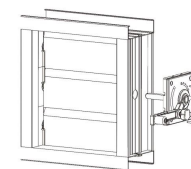
● FK023-Round return air grille



Material: Aluminum  
 Surface finish: Powder coated  
 Color: RAL9010 or RAL9016  
 Features:  
 - Formed by stamping  
 - Ideal for use on the ceiling or wall  
 - Clips for installation

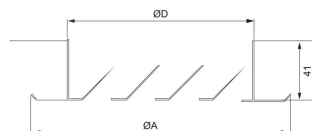
Specification	100	125	150	200
ØA	153	175	200	250
ØB	98	123	149	198
H	45	45	45	45

● FK002-Air volume control damper (VCD)



Material: Aluminum  
 Surface finish: anodized  
 Features:  
 - All the sizes can be produced upon request

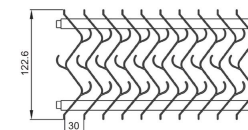
● FK034-Stamping round return air grille \*Patented product



Material: Aluminum  
 Surface finish: Powder coated  
 Color: RAL9010 or RAL9016  
 Features:  
 - Blades are in 45° angle  
 - Wall and ceiling mount  
 - Water-proof

ØA	150	175	200	250	300	350
ØD	98	123	148	198	248	298

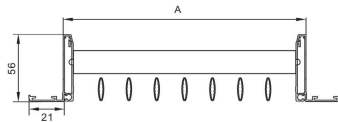
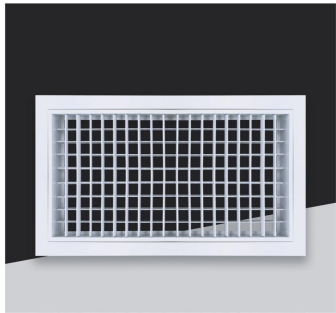
● FK053-Mist eliminator



Material: Aluminum  
 Surface finish: Mill. anodized  
 Feature: All the sizes can be produced upon the request



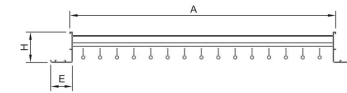
● FK007D-Removable single/double deflection air grille



Material: Aluminum  
 Surface finish: Powder coated, anodized  
 Color: RAL9016 or RAL9010  
 Features:  
 - Vertical or horizontal blades in front is available  
 - Removable core  
 - Ellipse shape blades  
 - Back with collar or damper is available

E	25	32		
---	----	----	--	--

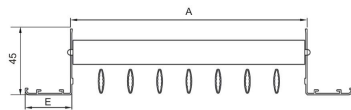
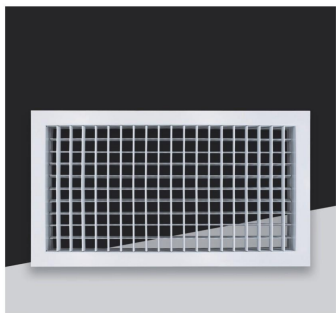
● FK040-Double deflection air grille



Material: Aluminum  
 Surface finish: Powder coated  
 Color: RAL9010 or RAL9016  
 Features:  
 - Adjustable blades  
 - Vertical or horizontal blades in front is available  
 - Back with collar or damper is available  
 - Straight shape blade

E	19	25	32			
H	38	45	50			

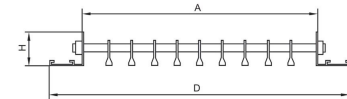
● FK008A-Adjustable single/double deflection air grille



Material: Aluminum  
 Surface finish: Powder coated  
 Color: RAL9010 or RAL9016  
 Features:  
 - Adjustable blades  
 - Vertical or horizontal blades in front is available  
 - Back with collar or damper is available  
 - Olive shape blades

E	25	32		
---	----	----	--	--

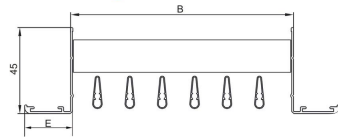
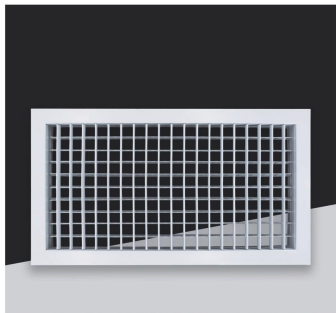
● FK011-Linear bar grille with 0° angle blades



Material: Aluminum  
 Surface finish: Powder coated  
 Color: RAL9010 or RAL9016  
 Features:  
 - Bars are fixed  
 - Back with collar or damper is available  
 - Screw holes in the surface is available

model number	1	2	3	4
Specification				
D-A	50	50	38	38
H	45	25	45	25

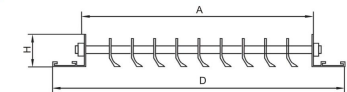
● FK008B-Adjustable single/double deflection air grille



Material: Aluminum  
 Surface finish: Powder coated  
 Color: RAL9010 or RAL9016  
 Features:  
 - Adjustable blades  
 - Vertical or horizontal blades in front is available  
 - Back with collar or damper is available  
 - Drip shap

E	25	32		
---	----	----	--	--

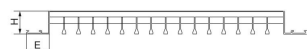
● FK010-Linear bar grille with 30° angle blades



Material: Aluminum  
 Surface finish: Powder coated  
 Color: RAL9010 or RAL9016  
 Features:  
 - Bars are fixed  
 - Back with collar or damper is available  
 - Screw holes in the surface is available

model number	1	2	3	4
Specification				
D-A	50	50	38	38
H	45	25	38	25

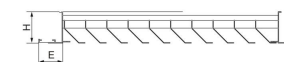
● FK042-Linear bar grille with 0° angles blades



Material: Aluminum  
 Features:  
 - White spray/ anodized/ mill finish  
 - We supply materials and accessories also

model number Specification	1	2	3	4
D-A	50	50	38	38
H	45	25	38	25

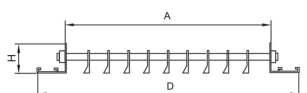
● FK044-Return air grille



Material: Aluminum  
 Features:  
 - White spray, anodized, mill finish  
 - We supply materials and accessories also

E	16	19					
H	27	27					

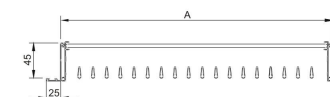
● FK009-Linear bar grille with 15° angles blades



Material: Aluminum  
 Feature:  
 - White spray/ anodized/ mill finish  
 - We supply materials and accessories also

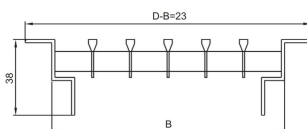
model number Specification	1	2	3	4
D-A	50	50	38	38
H	45	25	38	25

● FK030-Removable vertical single layer diffuser



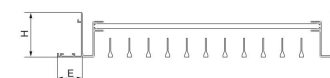
Material: Aluminum  
 Features:  
 - White spray, anodized, mill finish  
 - Back with nylon net is available  
 - We supply materials and accessories also

● FK061-Floor air grille with 0° angle blades



Material: Aluminum  
 Features:  
 - White spray/ anodized/ mill finish  
 - We supply materials and accessories also

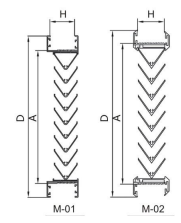
● FK039-Removable horizontal single layer diffuser



E=25  
 Material: Aluminum  
 Features:  
 - White spray, anodized, mill finish  
 - Back with nylon net is available  
 - We supply materials and accessories also



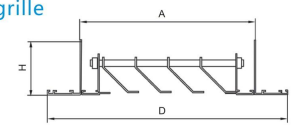
● FK014-Fixed door louver



Material: Aluminum  
 Features:  
 - White spray, anodized, mill  
 - We supply materials and accessories

model number	M-01	M-02			
Specification					
D-A	36	26			
H	30	27			

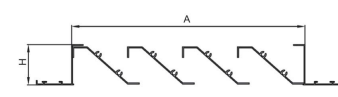
● FK006-Openable hinged air return grille



Material: Aluminum  
 Feature:  
 - White spray, anodized and mill  
 - We supply materials and accessories

model number	1	2	3		
Specification					
D-A	60	50	60		
H	50	45	45		

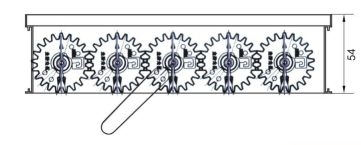
● FK012-Water-proof louver



Material: Aluminum  
 Feature:  
 - White spray, anodized and mill  
 - We supply materials and accessories also

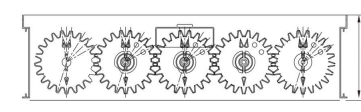
Specification	1	2			
D-A	60	60			
H	50	38			

● FK027-Opposed blade damper



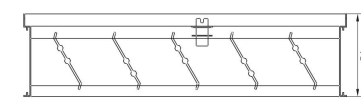
Material: Aluminum + Plastic  
 Color: mill and black  
 Feature: Spray, anodized, mill finish

● FK027A- Opposed blade damper - Screw type



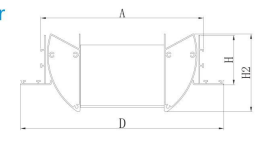
Material: Aluminum + Plastic  
 Color: mill and black  
 Feature: Spray, anodized, mill finish

● FK027B- Opposed blade damper - without wheel



Material: Aluminum  
 Color: mill and black  
 Feature: Spray, anodized, mill finish

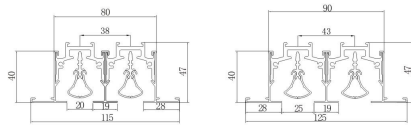
● FK015- Drum shape jet diffuser



Material: Aluminum  
 Features:  
 - Neck size ≥140mm  
 - White spray, anodized and mill finish  
 - We supply materials and accessories

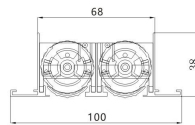
model number	FK015-A	FK015-B		
Specification				
D	40	62		
H	50	80		
H2	78	130		

● FK013A- Linear slot diffuser A



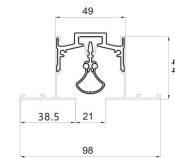
Material: Aluminum  
Slot size: 40mm, 45mm  
Face size: slot size + 35mm

● FK013B- Linear slot diffuser B



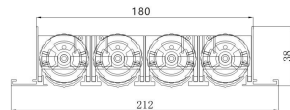
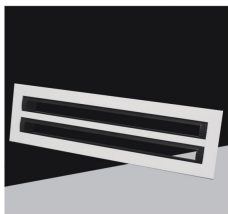
Material: Aluminum  
Slot size: 34mm  
Face size: slot + 32mm

● FK013C- Linear slot diffuser C



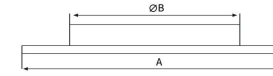
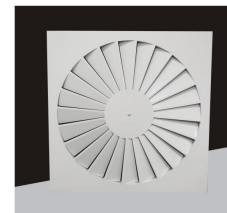
Material: Aluminum  
Slot size: 49mm  
Face size: slot size + 50mm

● FK013D- Linear slot diffuser D



Material: Aluminum  
Slot size: 45mm  
Face size: slot + 32mm

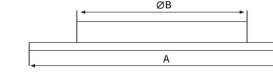
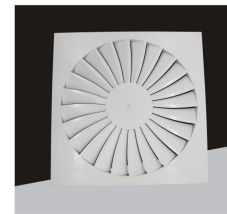
● FK063A- Square swirl ceiling diffuser- straight blade



Material: Aluminum, SUS steel, steel  
Features:  
- White spray  
- The cover is stamped, no welding points

Specification	250x250	300x300	350x350	400x400	450x450	500x500	550x550	595x595	650x650
A(mm)	250	300	350	400	450	500	550	595	650
∅B(mm)	198	248	298	348	398	448	498	533	598
Blade length	60	78	98	113	127	150	173	173	200
Blade number	12	12/18	18/20	20/22/24	18/20/24	20/24/30	22/24/30	24/30/36	24/30/36

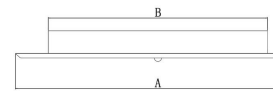
● FK063B- Square swirl ceiling diffuser- curved blade



Material: Aluminum, SUS steel, steel  
Features:  
- White spray  
- The cover is stamped, no welding points

Specification	250x250	300x300	350x350	400x400	450x450	500x500	550x550	595x595	650x650
A(mm)	250	300	350	400	450	500	550	595	650
∅B(mm)	198	248	298	348	398	448	498	533	598
Blade length	60	78	98	113	127	150	173	173	200
Blade number	12	12/18	18/20	20/22/24	18/20/24	20/24/30	22/24/30	24/30/36	24/30/36

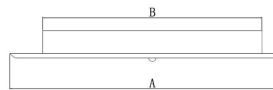
● FK063C- Round swirl ceiling diffuser-straight blade



Material: Aluminum, SUS steel, steel  
Features:  
- White spray  
- The cover is stamped, no welding points

A(mm)	250	300	350	400	450	500	550	600	650
B(mm)	198	248	298	348	398	448	498	548	598
Blade length	60	78	98	113	127	150	173	173	200
Blade number	12	12/18	18/20	20/22/24	18/20/24	20/24/30	22/24/30	24/30/36	24/30/36

● FK063D- Round swirl ceiling diffuser- curved blade

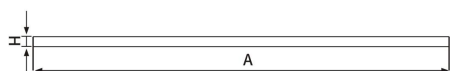


Material: Aluminum, SUS steel, steel  
Features:  
- White spray  
- The cover is stamped, no welding points

A(mm)	250	300	350	400	450	500	550	600	650
B(mm)	198	248	298	348	398	448	498	548	598
Blade length	60	78	98	113	127	150	173	173	200
Blade number	12	12/18	18/20	20/22/24	18/20/24	20/24/30	22/24/30	24/30/36	24/30/36



● FK064-24B Swirl ceiling diffuser



Material: Steel + Plastic  
 Surface finish: Powder coated  
 Feature:  
 -The cover is stamped, no welding points

Specification	600x600	
A (mm)	600	

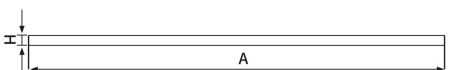
● FK066-48B swirl ceiling diffuser



Material: Steel + Plastic  
 Features:  
 - White spray  
 -The cover is stamped, no welding points

Specification	600x600	
A (mm)	600	

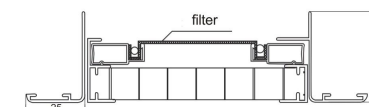
● FK065-36B swirl ceiling diffuser



Material: Steel + Plastic  
 Surface finish: Powder coated  
 Feature:  
 -The cover is stamped, no welding points

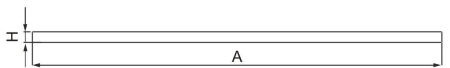
Specification	600x600	
A (mm)	600	

● FK016- Eggcrate diffuser with filter



Material: Aluminum  
 Features:  
 - White spray, anodized and mill finished  
 - Back with nylon net is available

● Fk065-48B swirl ceiling diffuser



Material: Steel + Plastic  
 Features:  
 - White spray  
 -The cover is stamped, no welding points

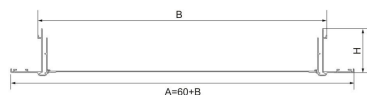
Specification	600x600	
A (mm)	600	

● FK017- Access door A



Material: Aluminum  
 Surface finish: white spray and mill  
 Color: RAL9016 or RAL9010  
 Feature: Hidden aluminum frame

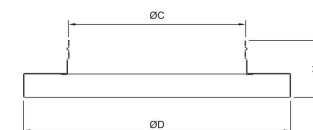
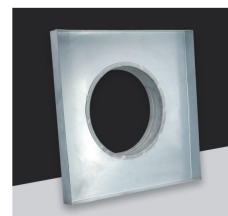
● FK017- Access door B



Material: Aluminum  
 Surface finish: white spray and mill  
 Color: RAL9016 or RAL9010  
 Feature: With aluminum panel, clip switch

BxB	200x200	250x250	300x300	350x350	400x400
BxB	450x450	500x500	550x550	600x600	1200x600

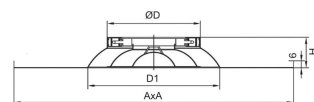
● FK036- Square turn round cover



Material: steel  
 Size: Customized  
 Surface finish: Powder coated and mill finished

ØC	100	150	200	250	300	350	400
H	95	95	95	95	95	95	95

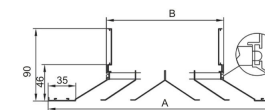
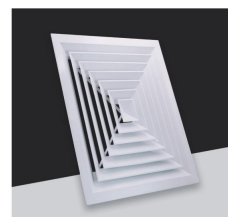
● FK028- Round ceiling diffuser



Material: Aluminum  
 Features:  
 - white spray, anodized is available  
 - We supply materials and accessories  
 - Back with air volume damper is available

Specification AxA	300x300	350x350	400x400	450x450	450x450	450x450	595x595	595x595	595x595	595x595
ØD	148	198	248	198	248	298	198	248	298	398
ØD1	240	290	340	290	340	390	290	340	390	440
H	65	65	65	65	65	65	65	65	65	65

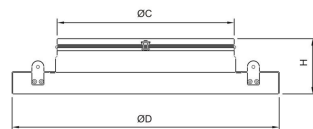
● FK003/C - 4 way square ceiling diffuser



Material: Aluminum  
 Features:  
 - White spray/anodized/mill finished  
 - We supply materials and accessories also  
 - Frames are stamped, no welding points

Specification	300x300	375x375	450x450	525x525	600x600
A(mm)	300	375	450	525	600
B(mm)	150	225	300	375	450

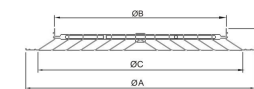
● FK035- Square turn round sector with damper



Material: Steel  
 Size: Customized  
 Surface finish: Powder coated  
 Color: Black

ØC	100	150	200	250	300	350	400
H	95	95	95	95	95	95	95

● FK003/F- 4 way square ceiling diffuser

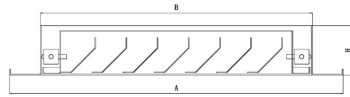


Material: Aluminum  
 Thickness: 0.8mm  
 Features:  
 - White spray/anodized/mill finished  
 - We supply materials and accessories also  
 - Frames are stamped, no welding points

Specification	150x150	225x225	300x300	375x375	450x450
A(mm)	295	370	445	520	595
B(mm)	148	223	298	373	448
C(mm)	231	306	381	456	531

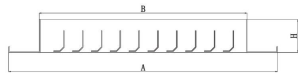
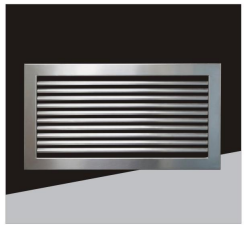


● SUS openable air return grille \*Patented design



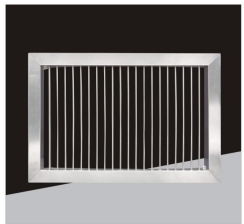
Size: To be customized  
 Material: Stainless steel  
 Application: Light steel frame or decoration  
 Feature: Formed by stamping, no welding points

● SUS square single horizontal layer bar grille \*Patented design



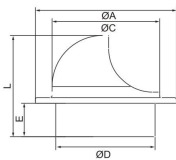
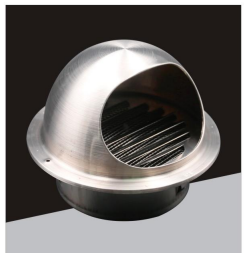
Size: To be customized  
 Material: Stainless steel  
 Application: Light steel frame or decoration  
 Feature: Formed by stamping, no welding points

● SUS square single vertical layer bar grille \*Patented design



Size: To be customized  
 Material: Stainless steel  
 Application: Light steel frame or decoration  
 Feature: Formed by stamping, no welding points

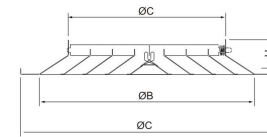
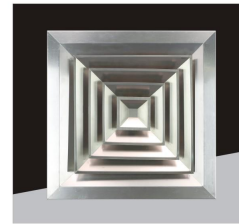
● BX-004 SUS air vent cap



Material: Stainless steel  
 Features:  
 - Used in kitchen, bathroom, outside wall  
 - With air intake louvers and stainless steel insect mesh

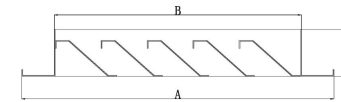
Specification	100	125	150	200
ØD	98	123	148	198
ØA	165	190	215	270
ØC	115	140	165	215
L	120	136	151	182

● BX-001 - SUS square diffuser



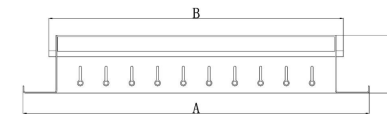
Size: To be customized  
 Material: Stainless steel  
 Application: Light steel frame or decoration  
 Feature: Formed by stamping, no welding points

● SUS water-proof air louver \*Patented design



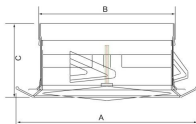
Size: To be customized  
 Material: Stainless steel  
 Application: Light steel frame or decoration  
 Feature: Formed by stamping, no welding points

● SUS adjustable double deflection air grille \*Patented design



Size: To be customized  
 Material: Stainless steel  
 Application: Light steel frame or decoration  
 Feature: Formed by stamping, no welding points

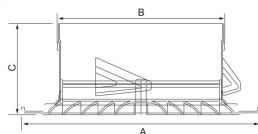
● ABS-Exhaust air disc valve



Material: Plastic  
 Features:  
 - Integral adjustable damper  
 - Includes collar and locking ring  
 - Delivers a uniform 360° air discharge pattern

Specification	80	100	125	150	200
A(mm)	111	150	169	195	250
B(mm)	72	96	119	147	192
C(mm)	88	88	88	88	88

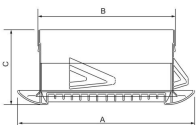
● ABS-015 Round ceiling diffuser



Material: Plastic  
 Features:  
 - 360° air flow diffusion  
 - Duct mounting directly  
 - Center button turning for adjusting air volume

Specification	80	100	125	150	200
A(mm)	112	145	167	192	246
B(mm)	72	96	119	147	192
C(mm)	70	70	70	70	70

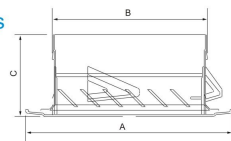
● ABS-016 Round air grille



Material: Plastic  
 Features:  
 - 360° air flow diffusion  
 - Duct mounting directly

Specification	80	100	125	150
A(mm)	119	136	151	185
B(mm)	77	96	119	146
C(mm)	80	80	80	80

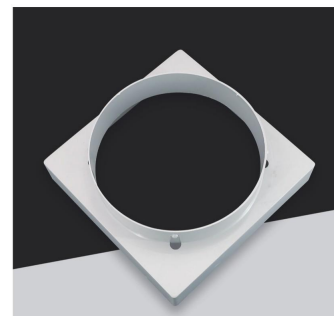
● ABS-017 Round air grille in 45° angle blades



Material: Plastic  
 Features:  
 - 45° angle blades  
 - With plastic net inside  
 - Duct mounting directly

Specification	80	100	125	150	200
A(mm)	110	144	167	192	245
B(mm)	72	96	119	147	192
C(mm)	70	70	70	70	70

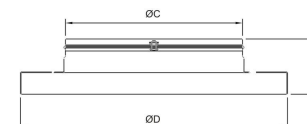
● ABS-001- Air adapt collar



Features:  
 - Air conditioning diffuser air mask, equipped with square aluminum diffuser cover  
 - No need thermal insulation cotton, no condensed water is produced

Equipped with aluminum face size	Square inner size	Round neck size
A 600x600mm	A 476x479mm	A 6"8"10"12"14
B 480x480mm	B 360x360mm	B 6"8"10"12"14
C 450x450mm	C 330x330mm	C 6"8"10"12"14
D 400x400mm	D 280x280mm	D 6"8"10"
E 350x350mm	E 230x230mm	E 6"8"
F 300x300mm	F 180x180mm	F 4"6"

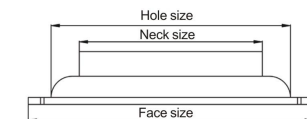
● ABS-002 Air adpته collar with fan blade damper



ØC = 145/195/245/295/345/400 mm

Installation size:  
 A-6", B-8", C-10", D-12", E-14"  
 Feature:  
 -Good seal, adjusted by screwdriver.  
 Application: Square air diffuser/grille

● ABS-003A/B Round diffuser

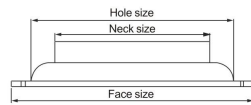


Features:  
 - Caps for screw holes  
 - Back with adjustable blade  
 - For decoration

Face size	Hole size	Neck size
A 405mm	A Ø340mm	Ø 6"8"10"12"
B Ø510mm	B Ø4405mm	Ø 6"8"10"12"14"



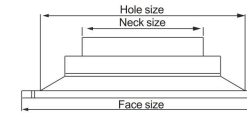
● ABS-004A/B Square turn to round diffuser



Feature:  
 - Back with fan blade damper is available  
 - Light steel frame

Face size	Hole size	Neck size
A 603x603mm	A 455x455mm	Ø 6"8"10"12"14"
B 595x595mm	B 455x455mm	Ø 6"8"10"12"14"

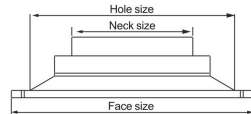
● ABS-007A/B- Square diffuser



Features:  
 - Caps for screw holes  
 - Back with fan blade is available  
 Application: Light steel frame  
 Accessory: Radius mask

Face size	Hole size	Neck size
A 450x450mm	A 390x390mm	Ø 6"8"10"12"
B 400x400mm	B 340x340mm	Ø 6"8"10"

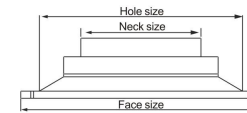
● ABS-008A/B Square diffuser



Feature:  
 - Injection of plastics from a complete mold  
 - Back with fan blade damper is available  
 Application: Light steel frame  
 Annex: Radius mask

Face size	Hole size	Neck size
A 603x603mm	A 420x420mm	Ø 6"8"10"12"14"
B 595x595mm	B 420x420mm	Ø 6"8"10"12"14"

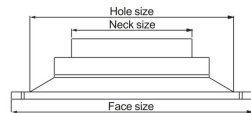
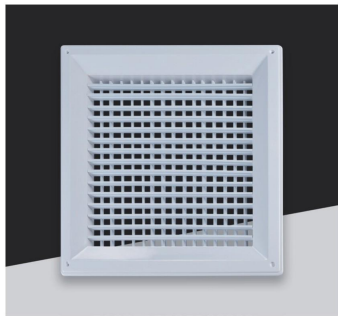
● ABS-007C/D Square diffuser



Features:  
 - Injection of plastics from a complete mold  
 - Back with fan blade is available  
 Application: Light steel frame  
 Accessory: Radius mask

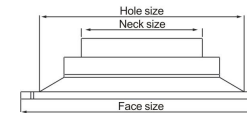
Face size	Hole size	Neck size
A 350x350mm	A 290x290mm	C Ø 6"8"
B 300x300mm	B 240x240mm	D Ø 6"8"

● ABS-005 Square double layer grille



Feature:  
 - Screw hole spin  
 - Back with fan blade damper  
 Application: Light steel frame  
 Annex: Radius mask

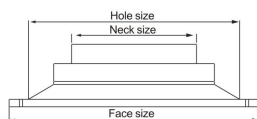
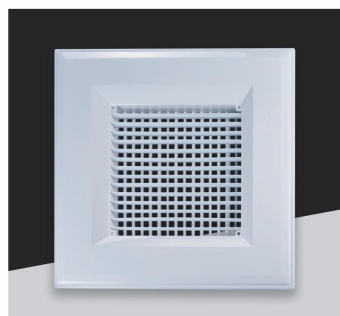
● ABS-008C Square diffuser



Features:  
 - Integrated project design  
 - Attach fan control switch  
 Application: Light steel frame  
 Accessory: Radius mask

Face size	Hole size	Neck size
C 600x600mm	C 540x540mm	Ø 6"8"10"12"14"

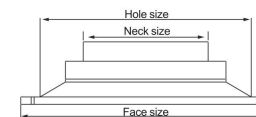
● ABS-006A/B Square double layer diffuser



Feature:  
 - Adjustable blades  
 - Back with fan blade damper is available  
 Application: Light steel frame  
 Annex: Radius mask

Face size	Hole size	Neck size
A 603x603mm	A 420x420mm	Ø 6"8"10"12"
B 595x595mm	B 420x420mm	Ø 6"8"10"12"

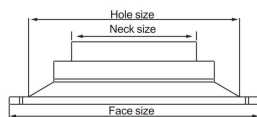
● ABS-011A/B- Square linear bar grille



Feature:  
 - Blades are adjustable  
 - Caps for screw holes  
 - Back with fan blade damper is available  
 Application: Light steel frame  
 Annex: Radius mask

Face size	Hole size	Neck size
A 603x603mm	A 420x420mm	Ø 6"8"10"12"14"
B 595x595mm	B 420x420mm	Ø 6"8"10"12"14"

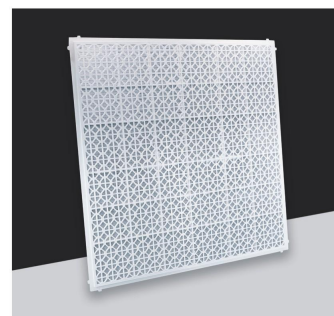
● ABS-009 Square single layer grille



Feature:  
 - Caps for screw holes  
 - Adjustable blades  
 - Back with fan blade damper is available  
 Application: For decoration  
 Annex: Radius mask

Face size	Hole size	Neck size
A 450x450mm	390x390mm	Ø 6"8"10"12"

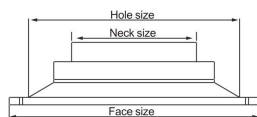
● ABS-012A/B Ceiling diffuser with filter



Application: Light steel frame  
 Annex: Nylon net

Face size		
A 603x603mm		
B 595x595mm		

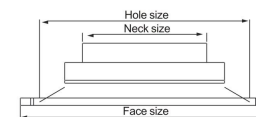
● ABS-010AB Square single layer diffuser



Feature:  
 - Adjustable blades  
 - Back with fan blade damper is available  
 Application: Light steel frame  
 Annex: Radius mask

Face size	Hole size	Neck size
A 603x603mm	A 420x420mm	Ø 6"8"10"12"
B 595x595mm	B 420x420mm	Ø 6"8"10"12"

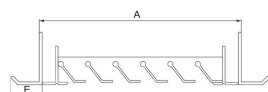
● ABS-013A/B Square linear bar grille



Feature:  
 - Back with nylon net is available  
 - Caps for screw holes  
 Application: For decoration  
 Annex: Radius mask

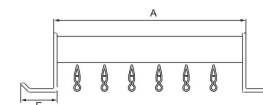
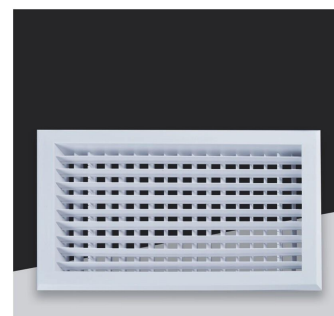
Face size	Hole size	Neck size
A 450x450mm	A 390x390mm	Ø 6"8"10"12"

● PVC-001 Open hinged air return grille



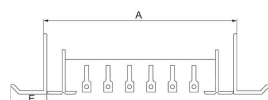
Size: Customized  
Material: PVC  
Application: Light steel frame or decoration

● PVC-004 Double layer diffuser



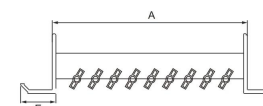
Size: Customized  
Material: PVC  
Feature:  
- Adjustable blades  
Application: Light steel frame

● PVC-002 0° Linear bar grille



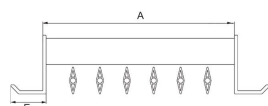
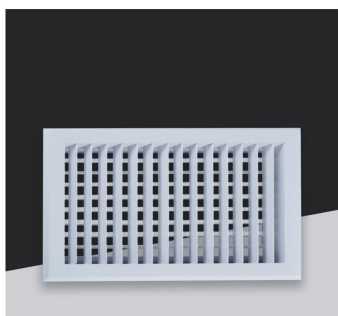
Size: Customized  
Material: PVC  
Application:  
- Light steel frame

● PVC-005 30° Linear bar grille



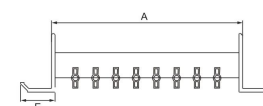
Size: Customized  
Material: PVC  
Feature:  
- Adjustable blades  
- For light steel frame

● PVC-003 Double layer diffuser



Size: Customized  
Material: PVC  
Application:  
- Olive shape blades  
- Light steel frame

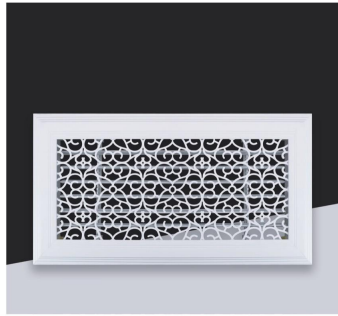
● PVC-006 0° Linear bar grille



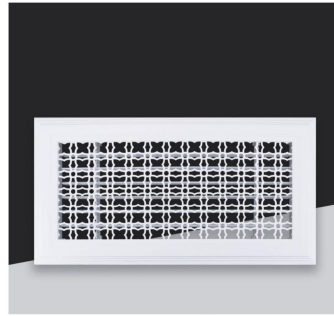
Size: Customized  
Material: PVC  
Feature:  
- Adjustable blades  
- For light steel frame



● PVC-007



● PVC-010



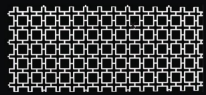
● PVC-008



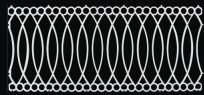
● PVC-011



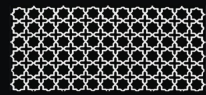
Optional style



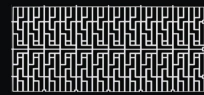
PVC-011



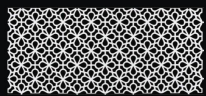
PVC-012



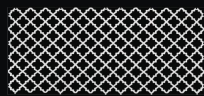
PVC-013



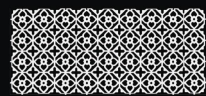
PVC-014



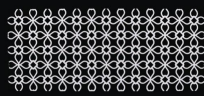
PVC-015



PVC-016



PVC-017



PVC-018